

I'M UII



ACADEMIC YEAR OF 2020/2021



UNIVERSITAS
ISLAM
INDONESIA

Academic Guide Book

PHARMACY STUDY PROGRAM
FACULTY OF MATHEMATICS AND
NATURAL SCIENCES



ISLAMI | MONDIAL | UNGGUL | INTELEKTUAL | INDONESIAIWI

PRECISE

CHAPTER I

Introduction

A. BRIEF HISTORY

In 1945, the general assembly of Masjoemi (Majelis Sjoero Moeslimin Indonesia) was held. The meeting was attended by several prominent political figures of that era including Dr. Mohammad Hatta (First Vice President of Indonesia), Mohammad Natsir, Mr. Mohamad Roem, and KH. Wahid Hasjim. One of the decisions of this meeting was the establishment of the Islamic High School (STI) by these prominent figures. STI was then established on July 8, 1945 to coincide with 27 Rajab 1364 H and developed into a university called the Universitas Islam Indonesia (UII) since November 3, 1947 to establish divine revelation as a source of inspiration for science and absolute truth, a mercy for mankind and the universe, in order to support and uphold the lofty ideals and sacred ideals of the Indonesian nation in educating the nation's life in line with spirit of formulation of the 1945 Constitution Opening.

Initially, UII had four faculties: Faculty of Religion, Faculty of Law, Faculty of Education, and Faculty of Economics, which started operations in June 1948. About seven months later, UII was forced to close due to Dutch military aggression. Many students and lecturers joined the Indonesian army to expel the Dutch. In early 1950s, shortly after the war, UII had to move lecture activities in several places to the city of Yogyakarta, even had to use Palace of Yogyakarta and the lecturer's houses as classrooms. Since early 1990s until now, UII has been developing an integrated campus located in Sleman Regency, in the northern part of Special Province of Yogyakarta. As of the even semester 2019/2020, UII has eight faculties with 4 Diploma Three (D3) programs, 25 Undergraduate Programs, 3 Professional Programs, 12 Masters Programs, and 4 Doctoral Programs and supporting institutions.

Universitas Islam Indonesia is one of the leading private Universities in Indonesia, more than 70% of study programs at UII have been accredited A (BAN-PT or LAMPTKes). According to QS Asia University Rankings 2019 & 2020, UII is among the 500 Best Universities in Asia. And on a national scale according to the Ministry of Research, Technology and Higher Education (2019), UII is ranked 17th. UII as an Islamic higher education institution, in the history of development has helped to guard the nation's journey through contributions in cultivation of students with superior personality according to universal and objective values based of Islamic faith and scientific truth. Therefore, UII is determined to always strive creatively and innovatively to create and develop science, technology, culture and art, in accordance with demands of human civilization based on Islamic principles.

B. VISION

University Islam Indonesia aspires to become a mercy for all humankind, an internationally recognized university committed to perfection and Islamic values in the field of education, research, community service and da'wa.

C. MISSION

Upholding Qur'an and Sunnah as the absolute source of truth and blessing for all humankind, and supporting Indonesia's noble and sacred ideals in nurturing the nation's intellectual life through the effort of: a) Generating devoted, ethical, and skillful muslim scholars; b) Developing and disseminating science, technology, and arts guided by Islamic values; c) Building a fair and prosperous society blessed by Allah, based on Pancasila and Constitution; and d) Comprehending, developing, and spreading the Islamic teachings to be lived and practiced by the university members and society at large.

D. BASIC VALUE

The basic value of the Universitas Islam Indonesia is the integration of the value of devotion (worship) and the value of excellence, which serves as the main foundation in building the vision and mission of the Islamic University of Indonesia.

E. EDUCATIONAL OBJECTIVES

1. Forming qualified Muslim intellectuals and national leaders, beneficial to society, mastering Islamic science and able to apply Islamic values and high competitiveness,
2. Developing and disseminating science, technology, literary culture and art with Islamic spirit,
3. Participating in building society and the Republic of Indonesia that is fair and prosperous and has the blessing of Allah,
4. Exploring, developing, and disseminating the understanding of Islamic teachings to be understood, lived and practiced by the citizens of the university and society.

F. MEANING OF UII SYMBOL



The symbol of UII consists of 3 colors, namely:

1. **The Blue color** means firmness, or authority. It UII's authority in producing wise Islamic scholars.
2. **The yellow color** or the gold decoration means hope and a symbol of education.
This means that UII will produce prosperous scholars as the hope of the nation who will be able to carry on and continue to spread knowledge through Islamic education.
3. **White color** means sincerity, honesty and perseverance. It means that the scholars who have been produced by UII are honest, loyal to their country and nation scholars as well as diligent and devoted to God Almighty, in accordance with the teachings and ideals of Islam.

As for the meaning of the symbol of the Universitas Islam Indonesia itself, namely:

1. The form of a shield means resilience and defense.
This means that UII will maintain its name as one of the universities capable of producing scholars in accordance with UII's goals.
2. The shape in the middle is distilled into a mosque dome.
It means a symbol of Indonesian culture in accordance with Islamic teachings.
3. Flowers that have five crowns can be interpreted as Pancasila, which can also be interpreted as the pillars of Islam.
4. Sari pistil on the flower. That is, a college symbol with four basic objectives (Higher Education Four Dharma).
5. The pen-shaped eye of the trident means education.
6. The middle leaf petals are stylized from the book which means the Holy Qur'an.
7. Lower petals have two supports.
The meaning is two sentences of shahada. Thus, the symbol in the middle as a whole means the purpose of UII based on Islamic teachings and Pancasila. Meanwhile, the shape of the the ship's pyramid as the door of the mosque under the lid is intended as the color of Islamic culture.

G. HYMNE OF UII

HYMNE UII

D Minnor 4/4

Lagu & Syair: Suhadi, 1977

Andante Maestoso

p

6 3 / 3.3 3 4 3 2 1 7 / 6 6 0 1 3 / 5 . 5 6 5 4 3 / 3.0

U-ni ver si tas Islam In-do ne sia. Pa da mu ka mi ber jan — ji.

2 3 / 5 . 4 3 1 2 / 4 . 3 2 7 . 1 / 2 3 3 3 2 1 2 / 3.0

Maju- kan stu-di gi at- kan bak-ti, un tuk pem-ba ngunan perti - wi.

mf *f*

3 3 / 6 . 6 7 6 8 6 / 3 4 0 6 . 6 / 1 . 1 7 6 8 / 7 6 . 0

Syari at I slama-malan ki- ta. Tegak-kan I- man dan Tau-hid.

p *poco rit*

6 6 / 7 7 7 6 5 4 / 6 5 4 3 1 2 / 3 6 . 3 2 1 7 / 7 6 6

Dengan Ca-lur Dhar-ma pe- doman nyata.Smoga Allah me-ri-dlo i U i i

0 0 0 : // 1 . 7 . / 6 . .

A Min.

CHAPTER II

PHARMACY STUDY PROGRAM

A. BRIEF HISTORY



The Pharmacy Study Program was established in 1998 and became one of the study programs under the Faculty of Mathematics and Natural Sciences. In early 2002, it has obtained accredited status from the National Accreditation Board of Higher Education. Based on existing developments and considerations of some progress that has been achieved and the support of stable UII management system, starting from first semester of academic year 2002/2003, a new study program was opened, namely Pharmacist Professional Study Program. This Program is organized with support of the Indonesian Pharmacist Association (IAI).

As a university that has experienced and supported by a stable management system, the Pharmacy Study Program has developed to anticipate high interest and high opportunities for alumni to work in pharmaceutical field. Since 2018 with the enactment of the Statute of UII 2018, Pharmacy Undergraduate Study Program and Pharmacist Professional Study Program are incorporated in the Department of Pharmacy. Currently, both of Pharmacy Undergraduate Study Program and Pharmacist Professional Study Program have received highest accreditation value (A) from the Independent Accreditation Institute for Higher Education of Health.

The Pharmacy Undergraduate Study Program was established with aim to produce Islamic and qualified pharmacy scholars for improvement of health services. The Undergraduate Curriculum builds the competencies of its graduates in the fields of Pharmacy Science and Technology, Clinical-Community Pharmacy and Social-Behavioral-Administrative. To respond to the paradigm shift in health care, which was originally product-oriented (drug oriented), now it is also expanding to patient-oriented related to safe and effective treatment.

In addition, the Pharmacy Undergraduate Study Program also develops local wisdom excellence in the field of Pharmaceutical Science and Technology in the developing natural materials to be used as medicines in health services. As an effort to support the competitiveness of graduates, this study program runs Students Centered Learning (SCL) learning system with various learning methods. Through the SCL learning system, self-reliance and active participation of students play a very important role in the lecture process and Practical that supports the achievement of learning subjects. This is also supported by very adequate laboratory facilities to support the teaching and learning process, Practical and research, as well as community services, and Islamic da'wah.

The Pharmacy Study Program also has Drug Information Center, Herbal Medicine Study Center, Nanopharmacy Research Center and Drug, Food and Cosmetic Testing Laboratory that is ISO 17025 certified by the National Accreditation Committee and Mini Teaching Hospital. Excellent cooperation with domestic and foreign institutions including the Halal Science Center Thailand, Rangsit University Thailand, IIUM Malaysia and the University of Rhode Island USA, as well as various health facilities institutions to demonstrate the implementation of qualified education, research, community service, and Islamic da'wah.

B. VISION

The Undergraduate Pharmacy Study Program of UII has set its vision as follows: **“to become a pharmacy study program that is superior in the promotion of rational drug use and development of pharmaceutical dosage forms from active natural compounds”**.

C. MISSION

Mission of the Undergraduate Pharmacy Study Program is as follows:

1. Implementing a quality education process in accordance with the demands of national standards and have a global orientation to produce competent Bachelor of pharmacy and pharmacist candidates.
2. Developing research in the field of developing medicinal and cosmetic dosage forms from natural ingredients as well as drug use evaluation whose results can be used to improve the quality of the education process and contribute to solving pharmaceutical and public health problems.
3. Cultivating noble character among the university member to support individual capacity building as the agent of *rahmatan lil'alam*.

D. OBJECTIVES

The objectives of the Undergraduate Pharmacy Study Program UII are as follows:

1. To produce qualified Bachelor of pharmacy and pharmacist candidates in accordance with the demands of national standards and ready to work in various fields of pharmacy
2. To produce quality scientific work in the field of drug use evaluation and development of medicinal and cosmetic preparations from natural ingredients and the results of which can be

used to improve the quality of education and contribute to solving pharmaceutical and health problems.

3. To build academic community who has noble characters as an agent of *rahmatan lil'alam*

E. QUALITY GOALS

The quality goals of Pharmacy Study Program UII are as follows:

1. Accreditation and/or certification of study program at International level.
2. The percentage of foreign students is 1%.
3. The average competency score for graduates is 3.30.
4. The percentage of lecturers with recognition/achievement at the national and international level is 5%.
5. The graduate user satisfaction index is 3.50.
6. Percentage of graduates with a standard study duration of 90%.
7. Stakeholders' satisfaction with the study program facilities is 75%.
8. The percentage of graduates working within three months is 80%.
9. Rate of cooperation implementation with 500 of the world's best universities is 1 activity/year
10. The percentage of lecturers who are active in Islamic preaching at the national or international level is 10%.

F. TEACHING STAFF

The following is a list of lecturers in the Undergraduate Pharmacy Study Program:

1. Dr. apt. Farida Hayati, S.Si., M.Si.
2. apt. Pinus Jumaryatno, S.Si., M.Phil., Ph.D.
3. Prof. Dr. apt. Yandi Syukri, S.Si., M.Si.
4. apt. Saepudin, S.Si., M.Si., Ph.D.
5. Dr. apt. Vitarani Dwi Ananda Ningrum, S.Si., M.Si.
6. apt. Suci Hanifah, S.F., M.Si., PhD.
7. Dr. apt. Arba Pramundita Ramadani, S.Farm., M.Sc.
8. Dr. apt. Asih Triastuti, S.F., M.Pharm.
9. apt. Siti Zahliyatul Munawiroh, S.F., Ph.D.
10. Dr. apt. Lutfi Chabib, S.Farm., M.Sc.
11. apt. Annisa Fitria, S.Farm., M.Sc.
12. apt. Ari Wibowo, S.Farm., M.Sc.
13. apt. Aris Perdana Kusuma, S.Farm., M.Sc.
14. apt. Bambang Hernawan Nugroho, S.Farm., M.Sc.
15. apt. Dimas Adhi Pradana, S.Farm., M.Sc.
16. apt. Dian Medisa, M.P.H.
17. apt. Diesty Anita Nugraheni, M.Sc.
18. apt. Fithria Dyah Ayu Suryanegara, S.Farm., M.Sc.
19. apt. Hady Anshory T, S.Si., M.Sc.
20. apt. M. Hatta Prabowo, S.F., M.Si.
21. apt. Mutiara Herawati, M.Sc.
22. apt. Ndaru Setyaningrum, M.Sc.
23. apt. Oktavia Indrati, S.Farm., M.Sc.
24. apt. Okti Ratna Mafruhah, S.Farm., M.Sc.
25. apt. Rochmy Istikharah, S.Farm., M.Sc..

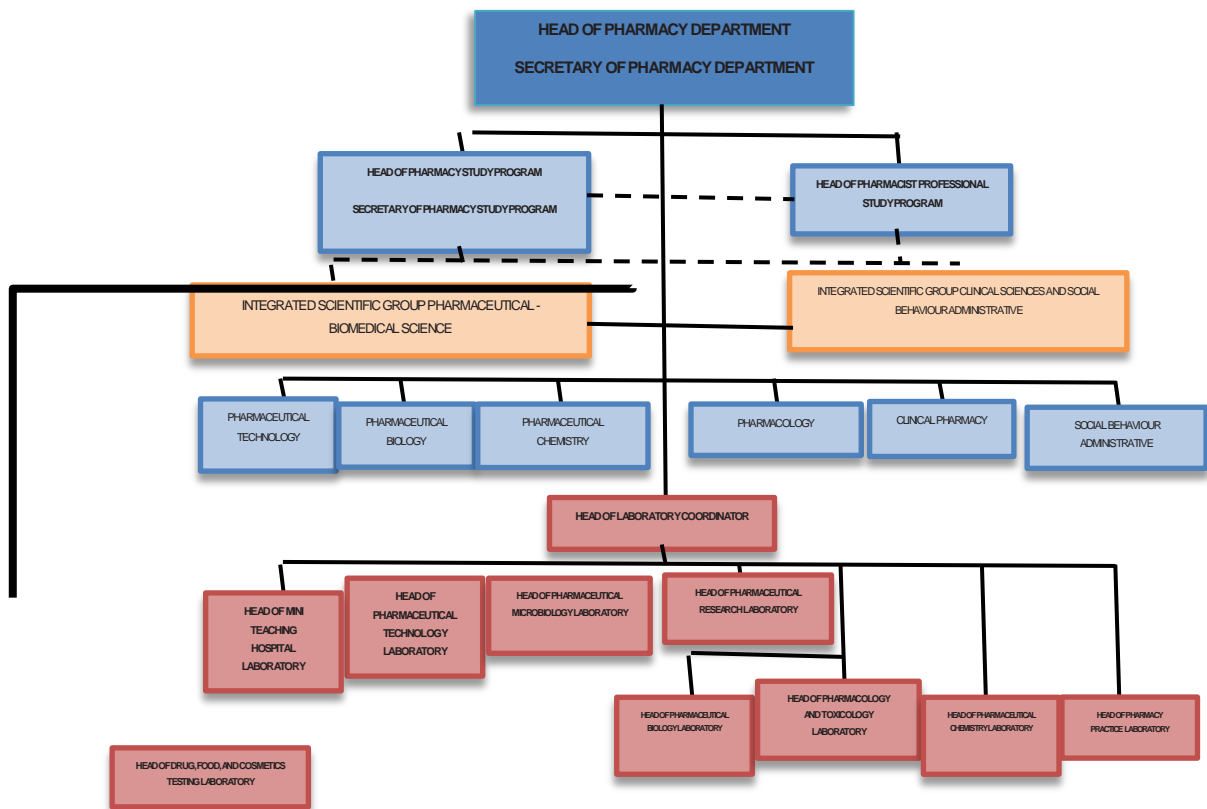
26. apt. Dra. Suparni, M.Si.
27. apt. Chynthia Pradiftha Sari, S.Farm., M.Sc.
28. apt. Yosi Febrianti, S.Farm., M.Sc.
29. apt. Yulianto, S.Farm., M.P.H.
30. apt. Sista Werdyani, S.Farm., M.Biotech.
31. apt. Arde Toga Nugraha, S.Farm., M.Sc.
32. apt. Cynthia Astiti Putri, S.Farm., M.Si.
33. apt. Novi Dwi Rugiarti, S.Si., M.Sc.
34. apt. Ardi Nugroho, S.Farm., M.Sc.
35. Shubhi M. Harimurti, MA.

CHAPTER III

FACILITIES

A. LABORATORY FACILITIES

1. LABORATORY STRUCTURE



: Instruction Line

: Coordination Line

Laboratory Coordinator : apt. Bambang Hernawan Nugroho, M.Sc.
 Laboratory Administrator : Latifah Nur Hidayati, S.P.

2. EDUCATIONAL LABORATORY

a. Laboratory of Pharmaceutical Chemistry



Head of Laboratory : apt. Sista Werdyani, M. Biotech.

Laboratory Assistants : Kuswandi

Yuliana Safitri, A.Md.

Subjects :

- ❖ Practical on Basic Pharmaceutical Chemistry
- ❖ Practical on Pharmaceutical Analysis
- ❖ Practical on Pharmaceutical Dosage Form Analysis
- ❖ Practical on Clinical Chemistry and Molecular Diagnostic

Facilities :

Shimadzu U1800 Spectrophotometer, Mini UV Spectrophotometer 1240, Furnace, Abbe Refractometer, pH meter, Digital Analytical Scales.

b. Laboratory of Pharmacology



Head of Laboratory : Dr. apt. Arba Pramundita Ramadani, M.Sc.

Laboratory Assistant : Sumarna

Subjects :

- ❖ Practical on Pharmacology
- ❖ Practical on Pharmacokinetics

Facilities :

Hot plate, Pletysmometer, Rotarod, Centrifuge, Olympus Microscope CX 41, Vortex, Digital analytical scales, metabolic cage

Other Supporting Facilities:

Preclinical Laboratory for Breeding and Caring Experimental animals such as zebra fish, mouse, mice, and rabbits

c. Laboratory of Pharmacy Practice



Head of Laboratory : apt. Yosi Febrianti, M.Sc.

Laboratory Assistant : Putri Novitasari, S.Farm.

Subjects :
❖ Practical on Pharmaceutical Dispensing

Facilities :
Water bath with shaker, Tablet Crusher, Powder Sealer

d. Laboratory of Pharmaceutical Biology



Head of Laboratory : Dr. apt. Asih Triastuti, S.F., M.Pharm.
Laboratory Assistans : Riyanto, A.Md.
Yon Haryanto, S.TP.

Subjects :
❖ Practical on Medicinal Plants and Simplicia
❖ Practical on Pharmacognosy and Traditional Medicines
❖ Practical on Natural Products Chemistry and Drug Discovery

Facilities:
Spray Dryer (Buchi B290), TLC Scanner 3 Camag, Freeze Dryer, Linomat Camag, Rotary Evaporator (ordinary, advance, and precision), Oven, Digital Analytical Scales, Cabinet Dryer, Distillator, Desiccator, Waterbath, Fume Hood, Various Extraction Tools, Electric Microscope & Olympus.

Other Supporting Facilities:
Laboratory of Medicinal Plants (for introduction of medicinal plants)



e. Laboratory of Pharmaceutical Microbiology



Head of Laboratory : apt. Arde Toga Nugraha, M.Sc.

Laboratory Assistant : Nangim Khasanah, A.Md.

Subjects :

- ❖ Practical on Microbiology and Parasitology

Facilities:

Laminar Air Low, ELISA Reader, Inkubator, Autoclave, Anaerobic Jar, Oven, Digital Analytical Scales, Scan 500, Stomacher, Diluflow, Microscope, Waterbath, Centrifuge, CO₂ Incubator, Liquid nitrogen Tube

f. Laboratory of Pharmaceutical Technology



Head of Laboratory : apt. Siti Zahliyatul Munawiroh, Ph.D.

Laboratory Assistants : Hartanto
Angga Kurniawan, A.Md.

Subjects :

- ❖ Practical on Physical Pharmacy
- ❖ Practical on Drug Dosage Form Design 1
- ❖ Practical on Drug Dosage Form Design 2
- ❖ Practical on Aseptic Formulation and Technology
- ❖ Practical on Pharmaceutical Industry

Facilities:

Biosart 100 membrane filtration Satorius, Autoclave (capacity 25 L & 50 L), Air Lock (ESCO), Granule sieve, Bunsen, Dunoi Ring (Kruss), Coating pan, Conductivity Tester (Mettler/Horiba), Disintegration tester (Erweka), Disolution tester (Erweka Dt 700), Aquadest Distillation, Footblad Drying, Freeabilator (Erweka), Hardness Tester, Ultraturak Homogenizer, Humidity

fiyer, calipers, Climatic chamber, compressor, LAF, Melting points, Blister Machine, Single Punch Tablet Machine, Microscope, Granulator Mixer, Stirrer Mixer, Oven, Water Handling, pH meter, Sieve shaker, Spectrophotometer, Tap density tester, Electric Scales, Tickness tester, Vacuum Cleaner, Viscometer, Centrifuge, Vortex, Incubator, Floability Tester, Syringe Pump, Ultrasonic Homogenizer, Osmometer, Kook Mixer, Moisture Balance, Shaking Waterbath.

g. Laboratory of Mini Teaching Hospital



Head of Laboratory : apt. Chynthia Pradiftha Sari, M.Sc.

Laboratory Assistant : apt. Nuraini Yuliawati, S.Farm.

Subjects :

- ❖ Practical on Drug Information and Counseling Services
- ❖ Practical on Pharmacotherapy
- ❖ Practical on Pharmaceutical Supplies Management

Facilities:

Equipment in accordance with the standards of pharmaceutical services in hospitals, equipment in accordance with the standards of pharmaceutical services in pharmacies, Drug Information Services Facilities, Hospital Management Information Systems

h. Laboratory of Drug, Food and Cosmetic Testing (ISO 17025 certified)



Head of Laboratory : apt. Annisa Fitria, S. Farm, M.Sc.

Laboratory Assistant : Bibit Cahya Karunia, S.Si.

Facilities :

HPLC Water e2695 (Detector UV/Vis 2489 & Fluorescence 2475), Karl Fisher, Ultrasonic shaker, pH meter, Digital Analytical Scales

i. Laboratory of Research



Head of Laboratory : apt. Suci Hanifah, Ph.D.

Laboran : Angga Kurniawan, A.Md.

Facilities :

Particle Size Analyzer (PSA), U-HPLC

B. STUDY CENTER

1. Drug Information Center



Drug Information Center is an organization in the field of Drug Information Services under the Department of Pharmacy with a lecturer as director. Drug Information Center was established to solve problems in drug use such as the urgency for accurate, unbiased, up to date, and comprehensive information on the use of drugs. In addition, high competition in nurturing reliable prospective pharmacists in the Clinical and Community Pharmacy was the driving factor in the birth of Drug Information Center UII. Because of those reasons, Drug Information Center can expand the role of pharmacists in the community by providing drug information both passively and actively and in order to promote rational medicine in the community. Drug Information Center was officially inaugurated by Vice Rector III (Ir. Bachnas, M.Sc.) on March 16, 2005, at the FTSP Auditorium at 10:00 a.m. On that date also coincided with the implementation themed "MEDICATION ERROR" with Prof. dr. Iwan Dwi Prahasto as speaker. In this case, Drug Information Center has officially expanded its wings to participate in providing drug information services to all circles.



Drug Information Center UII is one of the leading study centers in Undergraduate Pharmacy Study Program, consisting of 5 divisions namely Media and Information, PR (Public Relation), RnD (Resource and Development), Education and Training, and Public and Community Service. Many activities have been running since its inception until now, such as health counseling and free medical

treatment. In addition, Drug Information Center UII actively participates in events related to the Health Sector such as health seminars another activities such as Drug Information Center on The Road Event "National Health Day Commemoration" and Drug Information Center Corner.

To enhance the knowledge of Center for Drug Information members, the education and training division holds program for Counseling's Day, Journal Exploration and internal training. The current activity is broadcast on UNISI 104.5 FM radio regularly every Tuesday at 3.00 p.m. The theme of this event is OBATKU OBAT KITA (My Drugs, Our Drugs). At the event listeners are free to ask all matters related to health and medicine via telephone or SMS with regular speaker is apt. Yulianto, M.PH. who is better known as Romo Sukir as well as a lecturer in the Department of Pharmacy. He is active in the Indonesian Pharmacists Association (IAI) Yogyakarta and currently serves as Director of PIO.

2. Herbal Medicine Study Center



Herbal Medicine Study Center is a study center under the Department of Pharmacy Faculty of Mathematics and Natural Sciences, Islamic University of Indonesia which focuses on herbal medicine plants.

The objectives of this study center are:

- a. Empowering the teaching and learning process of the Pharmacy UII academic community, which the operational matter can be continuously utilized by all students, lecturers, researchers and general public who are interested in the progress and development of the world of medicine, especially in natural medicine using plants/traditional medicine.
- b. As a medium in developing and utilizing of medicinal plants in education, research, community service fields, and also da'wah Islamiyah through Herbal Medicine Research Center.

3. Laboratory of Food, Cosmetic and Medicine Testing



Laboratory accreditation is one of the best ways to guarantee quality and accuracy of analytical result data and increase confidence of laboratory practitioners. Laboratory accreditation provides several technical guarantees and competence of a laboratory to analyze sample according to ISO (International Organization for Standardisation) standards. ISO defines accreditation as a formal recognition of a testing laboratory that has the competence to conduct certain tests or special tests. In this case, laboratory accreditation means laboratory is able to conduct testing with certain testing methods and procedures correctly and accurately. So, accreditation guarantees the laboratory's ability in accredited scope.

Laboratory of Food, Cosmetic and Medicine Testing UII has strong commitment in developing laboratory to achieve credibility nationally and internationally by highlighting its strengths, such as good laboratory equipments, representative testing places, and adequate human resources. The University's commitment in quality is proven by obtaining ISO 9001:2008, as a pioneered into a World Class University.

Laboratory of Food, Cosmetic and Medicine Testing has very large opportunities, especially from potential customers aspect because of limited testing laboratories that apply Indonesian National Standard for food and beverages, growth of food and beverage markets, high public demands regarding safety of food and beverage products and increasingly open marketing opportunities in ASEAN and China.

4. Mini Teaching Hospital (MTH)



Undergraduate Pharmacy Study Program in order to educate prospective pharmacists to have predetermined competencies, establishing "Mini Teaching Hospital" as a learning media which not only educates in the cognitive domain of clinical pharmacy, but also builds affective and psychomotor competencies. Mini Teaching Hospital is the only place that has complete clinical pharmacy learning facilities in accordance with national competency standards in Indonesia.



Various facilities available at Mini Teaching Hospital are developed, including availability of a driver's license for management of pharmaceutical supplies which is built and developed by lecturers of the Undergraduate Pharmacy Study Program to support not only level of affective knowledge but also to practice actual Information and Management System (psychomotor). In addition, there is a drug information service room supported by information technology devices and access to adequate literature sources. Other available facilities such as 5 inpatient rooms that include 3 classes, monitoring drug level room, preparation room for mixing parenteral and intravenous dosage forms, cytostatic preparation room, counseling room for both local and international patients. So, graduates are expected to build the competence to compete globally.

CHAPTER IV

ACADEMIC ADMINISTRATION PROCESS

A. STUDENTS REGISTRATION

At the beginning of each semester, students who will actively participate in academic and other activities must register themselves/re-register, with the following procedures:

1. For active students in previous semester: paying tuition fee I (one) for first semester re-registration and tuition fee III (three) for second semester re-registration.
2. Students who actively return from academic leave:
 - a. Administering re-active permissions at the faculty
 - b. Paying the tuition fee payment I (one) for first semester registration, and the tuition fee payment III (three) for second semester registration.
3. In addition to making payments, students must up-date their personal data through UII GATEWAY information system.

B. SEMESTER ACADEMIC PLAN

Students who have registered are required to submit academic activity plan, including students who are only/are completing their thesis. The submission of academic activity plan is carried out by students directly by entering taken courses into the Semester Academic Plan via computer.

Number of semester credit unit (SCU) that can be taken ranges from 12-24, depending on previous semester GPA and other provisions related to certain courses. The Semester Academic Plan *key-in schedule is determined* by the University/Faculty and it is listed in Academic Calendar.

Terms and procedures for filling the Semester Academic Plan as follows:

1. Freshman (first semester)
 - a. The Semester Academic Plan *key-in* can be conducted after final registration of new students
 - b. The Semester Academic Plan filling is carried out by the operator of the faculty's academic division
2. Second and Next semester students
 - a. The Semester Academic Plan key-in can be conducted after payment tuition fee I (first semester) or tuition fee III (second semester)
 - b. Before the key-in, students should discuss with academic supervisors and make a design of the courses to be taken
 - c. Key-in is conducted through GATEWAY website (www.gateway.uii.ac.id)
 - d. The key-in must be conducted according to the specified schedule
 - e. The Semester Academic Plan changes can be made on The Semester Academic Plan revision schedule

3. Number of credits/courses that can be taken
 - a. For first semester students (new students), the amount of CREDITS that can be taken is determined according to the semester I course package
 - b. For semester II students and after, the number of credits that can be taken is based on combination matrix between the previous semester's GPA and cumulative GPA (see Figure 4.1)
 - c. For students who are active again after the academic leave and obtain permission from Rector, maximum number of credits that can be taken is based on the number of credits taken in last semester before the academic leave
 - d. For students who actively return after the academic leave without permission from the Rector, the maximum number of credits that can be taken is 12 credits
4. For students who take Community Service Course
 - a. Students who take Regular Community Service Program 1 are not allowed to take courses in running regular semester
 - b. Students who take Regular Community Service Program 2 are only allowed to take maximum 3 courses and not allowed to take Practical Courses
 - c. Students who take Extension or Thematic Community Service Program are allowed to take courses including Community Service Course with maximum 16 credits
 - d. Other provisions related to Community Service Program follow regulations stipulated by the Directorate of Research and Community Service UII
5. For students who are completing their thesis: provisions and procedures related to the completion of the thesis can be seen in the Undergraduate Pharmacy Study Program Thesis Guideline
6. Students who have passed closed theory judicium can only take Community Service Course and the Thesis

--

Students who do not fill The Semester Academic Plan even though they have registration/paid tuition fees are advised to apply for the academic leave and the tuition fee will be returned

C. ACADEMIC SUPERVISOR

For students who need consultation related to the taken courses or other problems related to academics, the Undergraduate Pharmacy Study Program has appointed a Lecturer as an Academic Supervisor in charge of assisting/directing students in deciding the compulsory and elective courses to be selected before conducting The Semester Academic Plan key-in, as well as in selection of titles or thesis topics, helping to find solutions when students have academic problems. Students must consult with their Academic Supervisor before implementing The Semester Academic Plan key-in.

D. ACADEMIC LEAVE

The Academic leave students are students who are not enrolled in the semester with the permission of the Rector with following conditions:

1. The Academic leave is only allowed for students who have actively taken 2 (two) semesters in the first year.
2. The Academic leave is given each semester with maximum duration is 4 (four) semesters either consecutively or non-consecutively.
3. Students who take academic leave are exempted from tuition fee payment and if the students are active again, they are obliged to pay administration fees and can take credits according to the previous semester achievement index.
4. The Academic leave and re-active procedures are stipulated by the Rector's Regulation.
5. Students who leave without permission are obliged to pay fixed tuition money during inactive period which is paid at the time being active again and can only take 12 (twelve) credits.

E. ACADEMIC LEAVE PROCEDURE

1. Students who are going on academic leave must apply for academic leave permit and fill out form provided by the Faculty and attaching:
 - a. An application letter for academic leave that has been signed by Dean.
 - b. Photocopy of Student Identity Card.
 - c. Free Fine Certificate from library.
 - d. Photocopy of receipts for the last tuition fee payment for related academic year.
 - e. Receipt of payment for the academic leave administration from Bank (original)
 - f. Courses Result Record that has been signed by the Academic Supervisor and Head of Study Program.
2. Students can take the Academic Leave permit that has been signed by Vice Rector I no later than 2 days after the academic leave application is submitted.
3. Extension of the academic leave must re-attach the academic leave letter request from the Faculty.
4. Schedule for the academic leave submission can be seen on the academic calendar.

F. INACTIVE STUDENTS

Inactive students are students who take leave without rector's permission or who do not re-register. Inactive students are not allowed to:

1. Participating in teaching and learning process
2. Participating in student activities
3. Receiving academic services

G. RE-ACTIVE AFTER ACADEMIC LEAVE

Procedure for re-active application is as follows:

1. Request for re-active permission is submitted according to the re-registration schedule listed in the academic calendar.
2. Students who will return to academic activity after academic leave must submit active application letter through Directorate of Academic Services by completing form provided at the Directorate of Academic Services and attached by the original Academic Leave permit signed by the Vice Rector I.
3. The reactivation permit can be taken 3 (three) days after the active application is submitted.

CHAPTER V

CURRICULUM OF UNDERGRADUATE PHARMACY STUDY PROGRAM

A. GRADUATES PROFILE

The profile of graduates of the Undergraduate Pharmacy Study Program is determined based on several considerations, such as: evaluation of the results of the tracer study, suggestions and feedback from stakeholders, the basic values of universities that have been stipulated in the Statutes of Universitas Islam Indonesia, profile of pharmacy graduates determined by Association of Indonesian Pharmacy Higher Education, as well as the vision and mission of Undergraduate Pharmacy Study Program UII. Based on these considerations, a statement regarding the profile of Undergraduate Pharmacy Study Program of UII graduates is determined as follows:

"The Pharmacy Study Program is committed to producing bachelor of pharmacy with sufficient ability to carry out pharmaceutical work (care givers) in all pharmaceutical work-fields supported by leadership motivation (leader) and qualified communication skills (communicators) with good spirit as learner (lifelong learners) and knowledge disseminators (educators) oriented to solving problems (researchers and decision makers) based on noble characters and passion (prophetic spirit and character) to provide benefits (enterpreuner) for the wider community (international orientation)"

The noble character to be achieved refers to the main noble character possessed by the Prophet Muhammad ﷺ who must become the spirit of his ummah in living life and also basic values of UII. These **prophetic spirit and characters** for graduates of the Undergraduate Pharmacy Study Program UII are described as follows:

1. **Shiddiq** : honesty and integrity in carrying out duty and authority
2. **Amanah** : responsibility, dedication and discipline in carrying out the duty and authority based on sincere attitude
3. **Fathonah** : conscientious and meticulous in taking conclusions and actions related to the duty and authority by prioritizing win-win solution and mutual benefit principles
4. **Tabligh** : Have the courage to convey correct and accountable information and ready to provide the best service while promoting ethics of manners, as well as compassion and social sensitivity

To make it easier to remember, the formulated profile of graduates is abbreviated as **PRECISE** with the description as in Table 1. The **PRECISE** stands for as follows:

P : Prophetic spirit and characters

- R** : Researcher and Life-Long Learner
E : Enterpreuner
C : Care Giver
I : International Orientation
S : Sensible Leader and Decision Maker
E : Effective Communicator

Table 1 Description of the Undergraduate Pharmacy Study Program Graduates Profile

Graduates profile	Description
Prophetic spirit and characters	Have a noble character according the example of the Rasulullah that is implemented in shape of honesty and integrity in carrying out the duty and authority as implementation of Shiddiq ; Responsibility, dedication and discipline in carrying out the duty and authority based on sincere attitude as the implementation of the Amanah ; conscientious and meticulous in taking conclusions and actions related to the duty and authority by prioritizing win-win solution and mutual benefit principles as an implementation of Fathonah ; Have the courage to convey correct and accountable information and ready to provide the best service while promoting ethics of manners, as well as compassion and social sensitivity as an implementation of Tabligh
Researcher and Life-Long Learner	Able to apply theoretical concepts related to pharmaceutical science in conducting relevant research in the field of pharmacy and health and increase the capacity of knowledge and skills on an ongoing basis to support pharmaceutical services and adaptt to regulatory changes in the pharmaceuticals sector both on national and international scale
Entrepreneur	Able to apply the relevant concept of entrepreneurship in the field of pharmacy based on spirit of spreading the greatest benefit to the community
Care Giver	Able to apply pharmaceutical science and skills to prepare safe and quality pharmaceutical dosage forms, providing drug counseling to patients and solving drug-related problems according to their authority
International Orientation	Able to adopt and implement global policies in performing work and services to patients based on openness, fortitude to Islamic values, and a passion to provide the widest benefit for Indonesian people and the world
Sensible Leader and Decision Maker	Able to apply leadership principles in carrying out pharmaceutical work and decision-making based on noble character and sensitivity to surrounding circumstances and environment
Effective health communicator and Educator	Able to apply effective communication in providing services to patients and education related to medicine and health in general to the community

B. LEARNING OUTCOMES

Based on the stipulated graduates profile, the learning outcomes are determined to support the achievement of the stipulated graduates profile. The National Standards of Higher Education in 2015 which require learning outcomes must include attitudes, knowledge, general skills and specific skills aspects, so the learning outcomes in the Undergraduate Pharmacy Study Program UII curriculum are compiled following these demands and presented in Tables 2 to 5.

Table 2 Learning Outcomes of Attitude

Code	Learning outcome	Description
SIF1	Islamic behavior	Able to express faith in God by applying the Islamic laws and universal values in daily life
SIF2	Inclusive attitudes	Able to express inclusive mindset and to get engaged in global society while maintaining Islamic and national identities
SIF3	Professional and ethics	Able to carefully and thoroughly apply responsible attitude, dedication, and punctuality based on sincerity, honesty and integrity at work along with the ability to show bravery in expressing the truth whilst maintaining politeness, ethics and affection and promoting mutual benefit

Table 3 Learning Outcomes of Knowledge

Code	Learning outcome	Description
PEF1	Fundamental pharmaceutical knowledge	To comprehend the theories, methods and concepts within the scope of pharmaceutical sciences and technologies in the disciplines of pharmaceutics, pharmacognosy, pharmaceutical chemistry and pharmacology as well as their application in pharmaceutical works
PEF2	Fundamental biomedical knowledge	To comprehend the fundamental theories, methods, concepts and application of biomedical sciences supporting the development of pharmaceutical sciences and services
PEF3	Knowledge on pharmaceutical work-fields	To understand the scope of pharmacy jobs in several different settings within the field of pharmaceutical sciences and services
PEF4	Knowledge on pharmaceutical law and ethics	To comprehend the laws and official regulations related with pharmaceutical practices and services
PEF5	Knowledge on pharmaceutical supply management	To comprehend the theories and applications on drugs and disposable medical supply management by following the concept of drug management cycle
PEF6	Integrative thinking	To comprehend the basic principles of integrating Islamic values within pharmaceutical sciences and practices

Table 4 Learning Outcomes of General skills

Code	Learning outcome	Description
KUF1	Leadership and management	Able to manage and perform tasks responsibly and able to make decision based on available data
KUF2	Self awareness and self development	Able to perform self analysis to find out self potency in order to further develop it continuously
KUF3	Research and development	Able to design and conduct scientific research supporting the application and development of pharmaceutical sciences
KUF4	Work safety	Able to apply the concept of work health and safety while carrying out pharmaceutical jobs
KUF5	Entrepreneurship	Able to analyze entrepreneurial opportunities by regarding self-potency and available resources in accordance with sharia principles
KUF6	Teamwork and collaboration	Able to analyze collaboration and partnership opportunities for self- and career development as well as be able to positively contribute in any teamwork

Table 5 Learning Outcomes of Specific Skills

Code	Learning achievements	Description
KKF1	Solution-oriented	Able to perform innovative solutions in the workplace
KKF2	Diffusive skills	Able to disseminate ideas and innovations of expertise in society
KKF3	Skill on pharmaceutical formulation	Able to design and formulate drug dosage forms in accordance with the principles of sharia and quality assurance
KKF4	Skill on quality control and assurance of pharmaceuticals	Able to apply standardized analytical methods for the quality and halal assurance of drugs and cosmetics
KKF5	Skill on pharmaceutical distribution	Able to apply theories and concepts on good pharmaceutical distribution system in accordance with the principles of quality assurance
KKF6	Skill on pharmaceutical services	Able to apply the concept of drug dispensing cycle and pharmaceutical care concept properly in drug dispensing processes
KKF7	Skill on drug information	Able to apply the concepts of evidence-based medicine in providing information related to drug with regard to the implementation of rational drug use
KKF8	Skill on therapeutic communication	Able to communicate with patients effectively within the context of drug dispensing by applying the principles of therapeutic communication
KKF9	Skill on health promotion	Able to conduct health promotion program within the scope of pharmaceutical issues in order to improve the health quality of the society

C. STUDY LOAD AND COURSE DISTRIBUTION

Based on the stipulated learning outcomes, study materials have been developed to fulfill it and then used to establish courses in the Undergraduate Pharmacy Study Program curriculum. Based on identification results of study materials required to meet the Learning Outcomes, a total 149 semester credits unit (SCU) have been determined with details of 140 for compulsory courses and 9 for elective subjects distributed in 8 semesters. The distribution of courses in 2017 curriculum of Undergraduate Pharmacy Study Program is as follows:

Semester 1

N ^o .	Code	Subject	Credit	ECTS	Prerequisite
1	UNI-101	In-Depth Fundamental Islamic Basic Values	0	0	-
2	UNI-102	Qur'anic Self Development	0	0	-
3	UNI-103	State Philosophy	2	3	-
4	UNI-104	Fundamental of Islamic Studies	2	3	-
5	UNI-105	English	2	3	-
6	SFA-106	Organic Chemistry	3	4.29	-
7	SFA-107	Basic Pharmaceutical Chemistry	2	3	-
8	SFA-108	Physical Pharmacy	3	4.29	-
9	SFA-109	Cell Biology	2	3	-
10	SFA-110	Pharmaceutical Compounding	2	3	-
11	SFA-111	Practical on Basic Pharmaceutical Chemistry	1	1.5	-
Total Credits for Semester 1			19	28.07	

Semester 2

N ^o .	Code	Subject	Credit	ECTS	Prerequisite
1	UNI-212	Bahasa Indonesia for Academic Communication	2	3.00	-
2	UNI-213	Civics Education	2	3.00	-
3	UNI-214	Islam for Scholars	3	4.29	-
4	UNI-222	Self-Development Training	0	0	-
5	SFA-215	Biochemistry	3	4.29	Organic Chemistry
6	SFA-216	Human Anatomy and Physiology	4	5.71	Cell Biology
7	SFA-217	Pharmaceutical Analysis	2	3.00	Basic Pharmaceutical Chemistry
8	SFA-218	Medicinal Plants and Simplicia	2	3.00	-
9	SFA-219	Practical on Pharmaceutical Compounding	1	1.50	Pharmaceutical Compounding
10	SFA-220	Practical on Physical Pharmacy	1	1.50	Physical Pharmacy
11	SFA-221	Practical on Medicinal Plants and Simplicia	1	1.50	-
Total Credits for Semester 2			21	30.79	

Semester 3

N ^o .	Code	Subject	Credit	ECTS	Prerequisite
1	UNI-322	Training on Leadership and Da'wah	0	0	In-Depth Fundamental Islamic Basic Values
2	SFA-323	Public Health	2	3	-
3	SFA-324	Drug Dosage Form Design 1	2	3	Physical Pharmacy
4	SFA-325	Clinical Chemistry	2	3	Biochemistry
5	SFA-326	Molecular Biology and Genetic	2	3	Biochemistry
6	SFA-327	Basics Pathology	2	3	Human Anatomy and Physiology
7	SFA-328	Pharmacognosy and Traditional Medicine	2	3	Medicinal Plants and Simplicia
8	SFA-329	Immunology	2	3	Human Anatomy and Physiology
9	SFA-330	Pharmacology	3	4.29	Human Anatomy and Physiology

10	SFA-331	Practical on Pharmacognosy	1	1.5	Medicinal Plants and Simplicia
11	SFA-332	Practical on Pharmaceutical Analysis	1	1.5	Pharmaceutical Analysis
Total Credits for Semester 3			19	28.29	

Semester 4

Nº.	Code	Subject	Credit	ECTS	Prerequisite
1	SFA-433	Practical on Clinical Chemistry and Molecular Diagnostics	1	1.50	Clinical Chemistry
2	SFA-434	Fundamental on Pharmacokinetics	3	4.29	Pharmacology
3	SFA-435	Drug Dosage Form Design 2	2	3.00	Drug Dosage Form Design 1
4	SFA-436	Microbiology and Parasitology	3	4.29	Biochemistry
5	SFA-437	Natural Products Chemistry and Drug Discovery	2	3.00	Pharmacognosy and Traditional Medicine
6	SFA-438	Pharmaceutical Dosage Form Analysis	3	4.29	Pharmaceutical Analysis
7	SFA-439	Medicinal Chemistry	2	3.00	Pharmacology
8	SFA-440	Basic Concepts of Therapy	3	4.29	Pharmacology
9	SFA-441	Practical on Pharmacology	1	1.50	Pharmacology
10	SFA-442	Practical on Pharmaceutical Dosage Form Analysis	1	1.50	Pharmaceutical Analysis
11	SFA-443	Practical on Drug Dosage Form Design 1	1	1.50	Drug Dosage Form Design 1
Total Credits for Semester 4			22	32.14	

Semester 5

Nº.	Code	Subject	Credit	ECTS	Prerequisite
1	SFA-544	Islam as Mercy to the World	3	4.29	Islam for Scholars
2	SFA-545	Sharia Entrepreneurship	2	3	Minimum 50 CSUs have been taken
3	SFA-546	Aseptic Formulation and Technology	2	3	Microbiology and Parasitology
4	SFA-547	Research Methods and Biostatistics	3	4.29	Bahasa Indonesia for Academic Communication
5	SFA-548	Pharmacotherapy 1	2	3	Basic Concepts of Therapy
6	SFA-549	Pharmacotherapy 2	2	3	Basic Concepts of Therapy
7	SFA-550	Practical on Pharmacokinetics	1	1.5	Fundamental of Pharmacokinetics
8	SFA-551	Practical on Natural Products Chemistry and Drug Discovery	1	1.5	Natural Products Chemistry and Drug Discovery
9	SFA-552	Practical on Drug Dosage Form Design 2	1	1.5	Drug Dosage Form Design 2
10	SFA-553	Practical on Microbiology and Parasitology	1	1.5	Microbiology and Parasitology
11	SFA-9xx	Elective course	3	4.29	Please see list of elective courses
Total Credits for Semester 5			21	30.86	

Semester 6

Nº.	Code	Subject	Credit	ECTS	Prerequisite
1	SFA-653	Pharmaceutical Supplies Management	3	4.29	Basic Concepts of Therapy
2	SFA-654	Applied Pharmacokinetics	2	3.00	Fundamentals of Pharmacokinetics
3	SFA-655	Pharmaceutical Industry	2	3.00	Drug Dosage Form Design 2
4	SFA-656	Pharmacotherapy 3	3	4.29	Basic Concepts of Therapy
5	SFA-657	Drug Information and Counseling Services	2	3.00	Basic Concepts of Therapy
6	SFA-658	Pharmaceutical Dispensing	2	3.00	Basic Concepts of Therapy
7	SFA-659	Practical on Aseptic Formulation and Technology	1	1.50	Aseptic Formulation and Technology
8	SFA-660	Practical on Pharmaceutical Supplies Management	1	1.50	Basic Concepts of Therapy
9	SFA-662	Practical on Pharmaceutical Dispensing	1	1.50	Basic Concepts of Therapy
10	SFA-9xx	Elective course	3	4.29	Please see list of elective courses
Total Credits for Semester 6			20	29.36	

Semester 7

Nº.	Code	Subject	Credit	ECTS	Prerequisite
1	SFA-763	Pharmacotherapy 4	3	4.29	Basic Concepts of Therapy
2	SFA-764	Pharmacotherapy 5	4	5.71	Basic Concepts of Therapy
3	SFA-765	Pharmacy Ethics and Law	2	3	Pharmaceutical Dispensing
4	SFA-766	Pharmacoepidemiology and Pharmacoeconomic	2	3	Basic Concepts of Therapy
5	SFA-767	Supporting Management	2	3	Pharmaceutical Supplies Management
6	SFA-768	Practical on Pharmacotherapy	1	1.5	Pharmacotherapy 1
7	SFA-769	Practical on Drug Information and Counseling Services	1	1.5	Drug Information and Counseling Services
8	SFA-770	Practical on Pharmaceutical Industry	1	1.5	Pharmaceutical Industry
9	SFA-770	Research Proposal	1	1.5	Research Methods and Biostatistics Minimum 110 SCU have been taken GPA \geq 2,50
10	SFA-9xx	Elective course	3	4.29	Adjusted
Total Credits for Semester 7			20	29.29	

Semester 8

Nº.	Code	Subject	Credit	ECTS	Prerequisite
1	UNI-872	Community Service	2	3.00	Minimum \geq 100 SCU have been taken - GPA \geq 2,00
2	UNI-873	Final Research Project	5	8.57	Research Proposal with grade \geq B
Total Credits for Semester 8			7	11.57	

Elective Course for Semester 5

Nº.	Code	Subject	Credit	ECTS	Prerequisite
-----	------	---------	--------	------	--------------

1	SFA-974	National Health System	3	4.29	Public Health
2	SFA-975	Pharmaceutical Biotechnology	3	4.29	Molecular Biology and Genetics
3	SFA-976	Halal Assurance of Pharmaceutical Products	3	4.29	Pharmaceutical Dosage Form Analysis
4	SFA-977	Standardization and Technology of Natural Products	3	4.29	Natural Products Chemistry and Drug Discovery
5	SFA-978	Natural Cosmetics and Aromatherapy	3	4.29	Natural Products Chemistry and Drug Discovery
6	SFA-979	Clinical Trials of Herbal Medicine	3	4.29	Pharmacology
7	SFA-980	Pharmacogenetics and Gene Therapy	3	4.29	Molecular Biology and Genetics

Elective Course for Semester 6

№.	Code	Subject	Credit	ECTS	Prerequisite
1	SFA-981	Entrepreneurship in Pharmaceutical Product Distribution	3	4.29	Sharia Entrepreneurship
2	SFA-982	Entrepreneurship in Herbal Medicine Production	3	4.29	Practical on Drug Dosage Forms 2
3	SFA-983	Entrepreneurship in Cosmetics Production	3	4.29	Practical on Drug Dosage Forms 2

Elective Course for Semester 7

№.	Code	Subject	Credit	ECTS	Prerequisite
1	SFA-984	Health Technology Assessment	3	4.29	Pharmaceutical Supplies Management
2	SFA-985	Business Communication	3	4.29	Sharia Entrepreneurship
3	SFA-986	Pharmaceutical Application Development	3	4.29	Pharmaceutical Supplies Management
4	SFA-987	Drug Therapeutic and Side-Effect Monitoring	3	4.29	Basic Concepts of Therapy
5	SFA-988	Nutrition and Dietary Therapy	3	4.29	Pharmaceutical Dispensing
6	SFA-989	Pharmacotherapy of Emergency and Critical Care Medicine	3	4.29	Therapeutic Concepts
7	SFA-990	Drug Design	3	4.29	Basic Concepts of Therapy

D. GENERAL PROVISIONS OF SEMESTER CREDIT SYSTEM

1. The system of organizing teaching and learning processes at undergraduate level in the Pharmacy Study Program is carried out using the Semester Credit System according to the Minister of Education and Culture Regulation number 3 in 2020 on National Standards of Higher Education.
2. In the Semester Credit System, students are given freedom to compile study plans with regard to offered courses, pre-requisite courses and GPA.
3. The Semester Credit System is an educational administration system using credit units to distribute student's study load, lecturer workload, learning experiences, and program implementation burdens on the basis of semester units equivalent to 16 weeks.
4. Credit is a unit that states the load of a course quantitatively.
5. One (1) credit lecture or tutorial activity for students is equivalent to 170 minutes per week per semester with details of fifty (50) minutes synchronized activities, sixty (60) minutes structured assignments given by lecturers, and sixty (60) minutes of independent study activities to enrich materials provided by lecturers.
6. One (1) credit Practical for students is equivalent to 1 x 170 minutes per week per semester practice activity.
7. Based on the 2017 The Undergraduate Pharmacy curriculum, the total study load that must be completed by students until graduation is 149 credits consisting of 140 credits compulsory courses and 9 credits of elective courses and distributed in 8 (eight) semesters
8. Schedule of lectures, exams, registration, and holidays are listed on the academic calendar which can be accessed on universities or faculties websites.
9. Flow of course taking in each semester can be seen in the study load and course distribution.

E. COURSES

1. Courses every semester are held for 16 weeks, including evaluation activities.
2. Synchronized lecture activities for every 1 credit are carried out with duration of 50 minutes per week
3. Practical activities for every 1 credit is carried out with duration of 1 x 170 minutes per week
4. To be able to take an exam, each student must attend lecture activities at least 75% of number of meetings held and must follow 100% of the Practical activities
5. Every student is required to follow the stipulated of courses applicable at Universitas Islam Indonesia.

F. EXAMINATION

1. Mid and Final Semester Examination

Exams are part of the education system to evaluate students' ability to achieve established learning outcomes. Quantitative exam results are expressed in the form of grades then combined into GPA. GPA measurement is carried out at the end of each semester called semester GPA, while the cumulative GPA is the student's GPA at a certain period of time, starting from the first semester of students undergoing the learning process to the last semester taken.

$\text{Semester GPA} = \frac{\sum [(course\ credits\ each\ semester) \times (load)]}{\sum (course\ credits\ each\ semester)}$
$\text{Cumulative GPA} = \frac{\sum [(total\ course\ credits) \times (load)]}{\sum (total\ course\ credits)}$

Regular courses exams (in addition to the thesis and thesis proposal exams, Community Service, Practical) are conducted in scheduled writing exams named the Mid and Final Semester Examination. In addition, the course learning outcomes evaluation component also uses structured assignments, quizzes, portfolios and other components according to characteristics of the course learning outcomes set in the course.

2. Learning Examination and Assessment

- To be eligible to participate in the Mid and the Final Semester Examination, students must meet the following requirements:
 - Paying tuition fee II for first semester and payment IV for second semester each year
 - Taking an exam card in academic administration section of the faculty
 - Validating the exam card in the academic administration section of the faculty by showing proof of tuition fee payment
- Structured assignments to students can be conducted in the form of portfolios, case analysis, review/studying journals/newspapers or other forms to evaluate student's performance determined by lecturers based on course learning outcomes, study materials and characteristics of courses.
- Structured assignments that have been completed will get feedback from the lecturers.
- Lecturers can add other assessment components such as observations on attendance, discipline, as well as activeness and cooperation of students in teaching and learning process according to the predetermined course learning outcomes.
- During the Mid and Final Semester Examination students are required to comply with all applicable regulations including arriving 10 minutes before the exam, carrying an identity card, and prohibited from cheating and other stipulated provisions.
- Learning Result Card is an academic document that informs all recorded results of student learning activities in certain semester which includes number of courses taken, number of credits, grade of courses, and the achievement index
- Assessment of learning results is expressed in letters which have interpretation as follows:

A = 4.00	B = 3.00	C = 2.00	D = 1.00
----------	----------	----------	----------

A- = 3.75	B- = 2.75	C- = 1.75	E = 0
A/B = 3.50	B/C = 2.50	C/D = 1.50	
B+ = 3.25	C+ = 2.25	D+ = 1.25	

h. Final value criteria is as follows:

A	80.00 - 100	C+	62.50 – 64.99
A-	77.50 – 79.99	C	60.00 – 62.49
A/B	75.00 – 77.49	C-	55.00 – 55.99
B+	72.50 – 74.99	C/D	50.00 – 54.99
B	70.00 – 72.49	D+	45.00 – 49.99
B-	67.50 – 69.99	D	40.00 – 44.99
B/C	65.00 – 67.49	E	< 40.00

G. THESIS

Completing a final project is a requirement that must be completed by every student in order to hold a bachelor's degree. In the Pharmacy Study Program UII, the completion of the final project is divided into 2 (two) courses, namely the Thesis Proposal (1 SCU, semester 7) and the Thesis (5 SCU, semester 8). Thesis manuscripts are prepared based on the results of research conducted either in the laboratory and outside the laboratory such as in pharmacies, health centers, hospitals, or the community. Guidelines and regulations for the implementation of the final project can be found in the thesis information system and thesis guideline module, which can be accessed on the website.

The following are general rule relating to the completion of final project:

1. Students can take the thesis proposal course and carry out the proposal exam if it meets the specified requirements (Has taken the Research Methodology and Biostatistics course, has taken ≥ 110 credits, GPA ≥ 2.50)
2. Students who will prepare a thesis proposal are required to submit a thesis title by filling out the thesis title submission form and paying the thesis guidance fee
3. Students can choose the thesis supervisor after discussion and get the approval of the academic supervisor based on the information at the thesis information system.
4. Thesis titles and supervisors that have been proposed will be discussed in the lecturer council meeting to determine whether the proposed titles and supervisors can be approved or not.
5. Students whose thesis titles have been approved can continue writing thesis proposals and conduct thesis proposal seminars
6. Students who cannot complete their thesis within 6 (six) months from the proposal seminar must submit a thesis extension to the head of the study program with the approval of the thesis supervisor
7. If the thesis extension is approved, the student must pay the thesis extension fee and re-register the thesis title to the faculty of academic administration and re-register the thesis title at the thesis information system.
8. If counted up to 12 (twelve) months since the seminar of student proposals does not carry out the thesis

examination, the student's thesis is declared expired and canceled. The student is required to submit a thesis title with the original registration procedure.

9. Students are prohibited from carrying out acts of plagiarism in the preparation of proposals and thesis

H. EVALUATION OF LEARNING RESULTS

In accordance with Indonesian Islamic University Regulation No. 2 of 2017 concerning the Education and Learning Process within the Indonesian Islamic University, the evaluation of learning outcomes includes:

1. **Subject Evaluation**

Evaluation of this course is conducted as a form of reflection by the lecturers regarding the fulfillment of student learning outcomes in each subject. At the end of each semester, the study program submits the results of the students' learning achievements (grades in practicum). Each lecturer is able to evaluate and reflect on these results and prepare a plan for improvement efforts, further improvement of the learning process that is better documented through the self assessment report (SAR) form that is reported to the Chair of the Study Program.

2. **Semester Evaluation**

This evaluation is conducted to determine the development of student academic achievement and fulfillment of student learning achievements in each semester. This evaluation is carried out by the Academic Supervisor in which academic evaluation and guidance will be emphasized especially for students with a GPA < 2.50 , while students with a GPA ≥ 2.50 , according to the Academic Guidance Guidelines, are conducted by the Academic Supervisor. The results of this evaluation are carried out through academic explanation activities facilitated by the Study Program and also in the form of academic guidance before the next enrolment. The expected results of this evaluation are helping students to get better direction and guidance on learning strategies so that the study period and academic achievement index becomes better.

3. **Mid Study Evaluation**

This evaluation is conducted based on academic achievements during the first 4 (four) semesters, as a basis for determining the eligibility of students to continue their studies. There is a criterion for meeting the minimum number of SCU from the best score with a minimum Grade Point Average (GPA), which is a minimum of 40 best SCU with a minimum GPA of 2.00. This eligibility determination is carried out in stages through a process of monitoring as well as direction and guidance that starts at the end of each semester in the form of academic explanations and the end of semester 2.

4. **Final Evaluation**

This evaluation is intended to determine the fulfillment of all graduate learning outcomes and / or fulfillment of graduation requirements set by the University and Study Program to determine student graduation. This evaluation was carried out through the final graduation study that involved all pharmacy lecturers using the academic information system facility. Students can be declared graduated at the end of the study period in accordance with established conditions.

5. **Evaluation of Study Period Deadline**

This evaluation is carried out to evaluate the duration of study and academic achievement of students at the maximum study period limit, which is 14 semesters. Determination of the deadline is done in stages through a process of monitoring and direction and guidance starting at the end of each semester in the form of academic explanations and the end of semester 12.

Students who **are unable** to complete their studies in the Undergraduate Pharmacy Study Program, are grouped into "**resigning**" and "**expelled**" status with following explanations:

1. Resigning

A student is declared as resigning if the student: declares resignation in writing; declares transfer in writing; passed away; inactive in second semester of first year for new students; inactive without written permit from the Rector for 2 (two) consecutive semesters; or inactive for more than 4 (four) semesters with written permit from the Rector or without the Rector's permit. Students who are categorized as inactive because they are not enrolled in a certain semester without rector's permit, can be given Certificate of Resignation from the Rector.

2. Expelled

Students are declared as expelled if they do not pass the middle evaluation of the study period or the evaluation of the end of the study period. Students are declared to fail to pass the mid-study period evaluation if they do not meet the best 40 credits with minimum GPA 2.00 while the maximum study period limit for undergraduate students is 14 semesters.

I. RESIGNING STATUS PROCEDURE

1. The Head of Study Program identifies students who meet status of resigning because:
 - a. inactive at the second semester of the first year for new students
 - b. inactive without written permission from the Rector for 2 (two) consecutive semesters
 - c. inactive for more than 4 (four) semesters with or without written permit from the Rector
2. Students who were included into category no. 1, submitted by the Head of study program to the Faculty Senate Meeting through the Dean for approval.
3. If approved by the Faculty Senate, the Dean will submit issuance for Certificate of Resignation to the Rector so that the status of students in GATEWAY is declared as "Resigning".

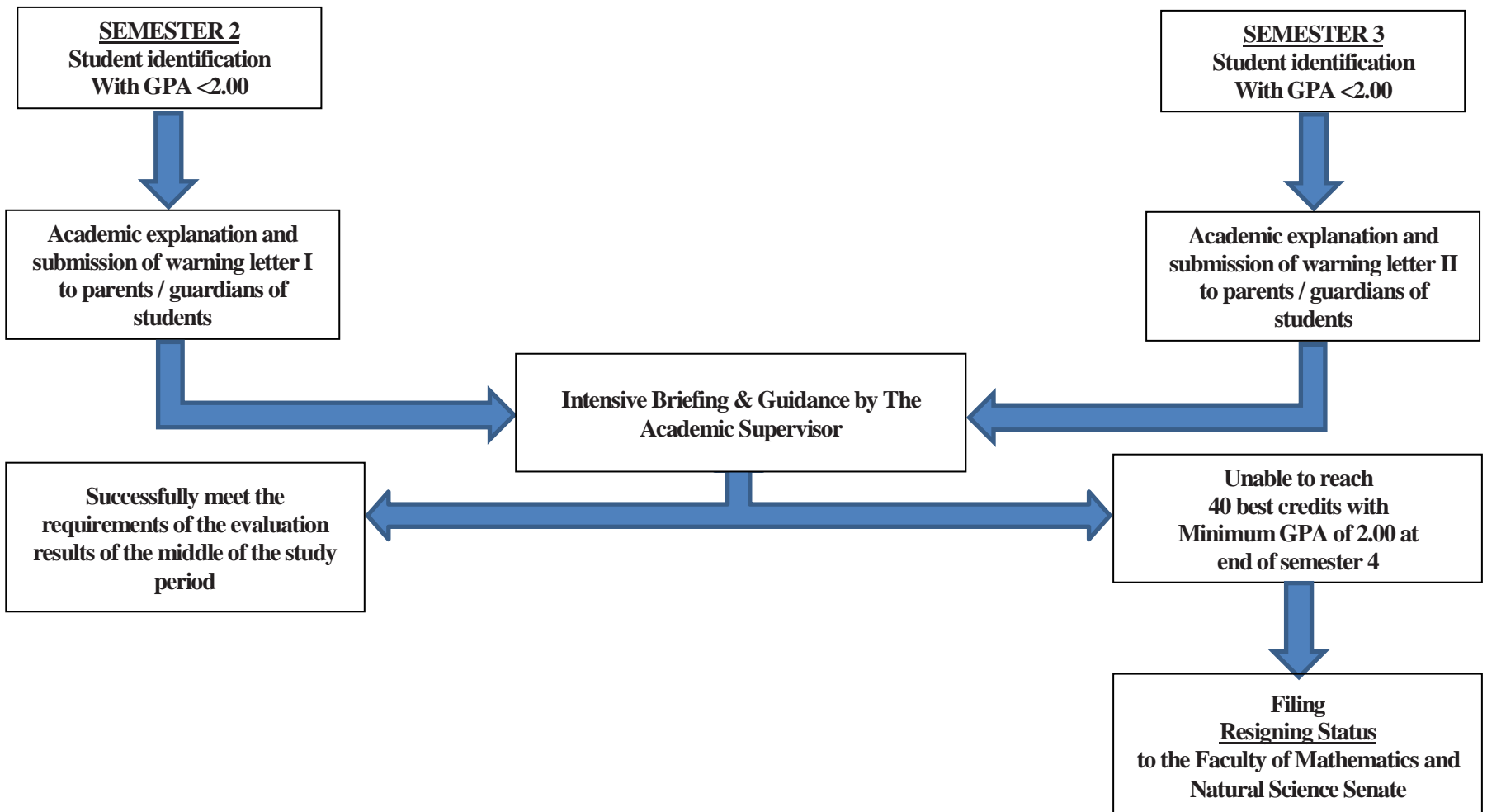
J. EXPELLED STATUS PROCEDURE

1. The Head of Study Program identifies students with potential expelled status because they do not meet the requirements of graduation in the mid-study period evaluation or evaluation of the end of the study period and then perform following actions:
 - a. Providing academic explanations publicly and individually to students with GPA < 2.50 at the end of each semester and for students with this category will be given intensive briefing and guidance
 - b. For students with GPA < 2.00 at the end of semester 2 and GPA < 2.50 at the end of semester 12, a First Warning Letter will be addressed to parents/guardians of students and furthermore to students with this category are given intensive briefing and guidance.
 - c. For students with GPA < 2.00 at the end of semester 3 and GPA < 2.50 at the end of semester 13, a Second Warning Letter will be issued to parents/guardians of students. Intensive briefing and mentoring are given to students with this particular category.
2. For students with a GPA < 2.00 at the end of semester 4 and GPA < 2.50 at the end of semester 14, the Head of Study Program will submit them to the faculty senate through the Dean to obtain approval of the expelled status determination. If the submission is approved by the Faculty Senate, the Dean will submit issuance of a Expelled Certificate to the Rector so that

the status of students at GATEWAY is declared as “Expelled”

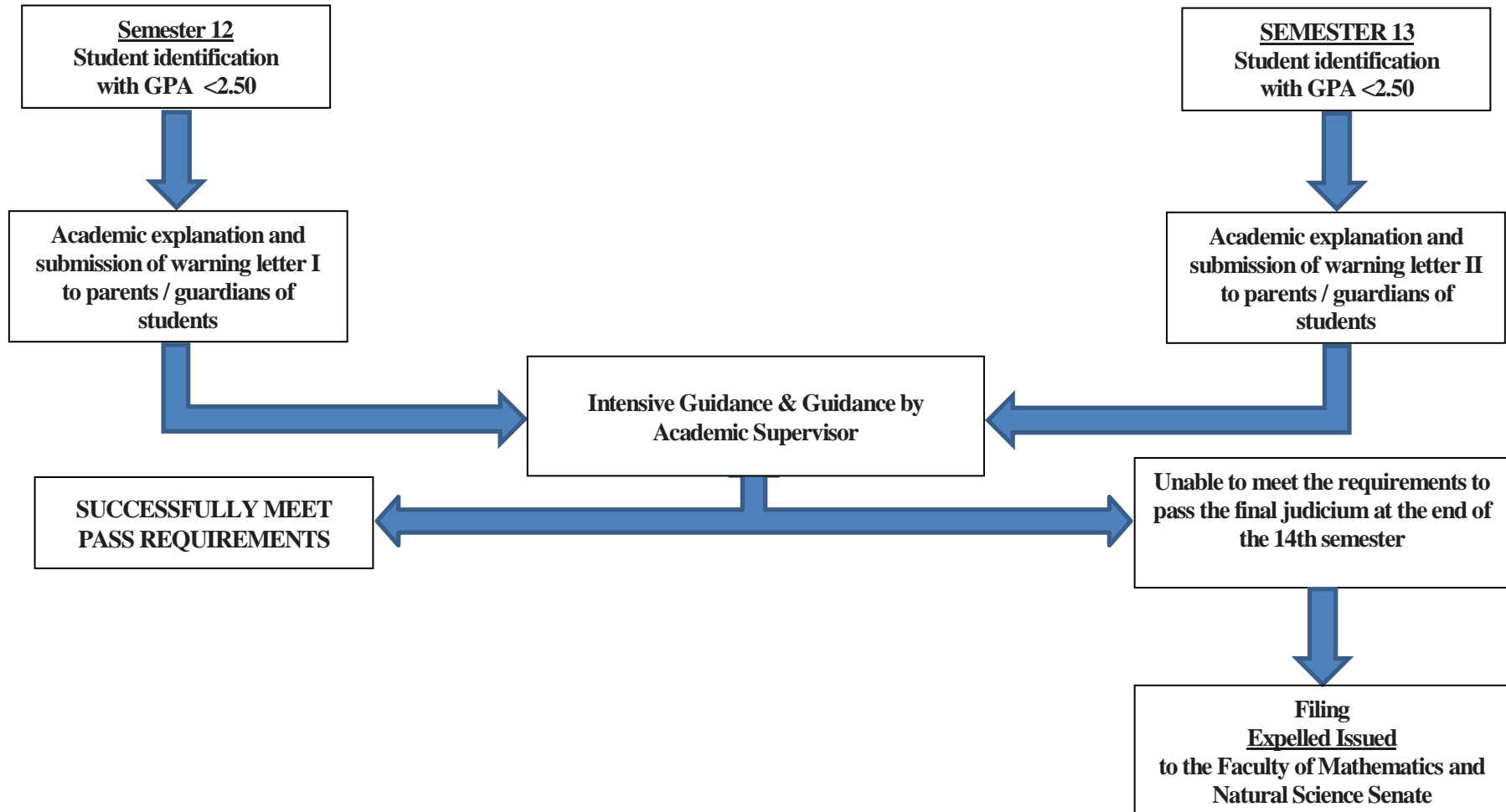
IDENTIFICATION AND HANDLING PROCEDURES STUDENTS WITH RESIGNING STATUS

Mid-Study Period



IDENTIFICATION AND HANDLING PROCEDURES STUDENTS WITH EXPELLED STATUS

Evaluation of Study Period



K. CLOSED THEORY JUDICIUM

Graduation in the closed theory judicium is the main requirement that must be fulfilled by students who will carry out the thesis exam. A student can be declared as graduated in the closed theory judicium if fulfilled following provisions:

1. Have completed all courses other than Community Service and Thesis (minimum 142 credits)
2. $GPA \geq 2.50$
3. Graduated from IDFIBV, Qur'anic Personal Development, Self-Development Training and Training on Leadership and Da'wah as proven by Course Result Record
4. Graduated with minimum C for all University Courses
5. Graduated with minimum C for all Practicum
6. Graduated with minimum C for Competency Courses, such as:
 - a. Pharmaceutical Compounding
 - b. Pharmaceutical Dispensing
 - c. Pharmacy Ethics and Law
 - d. Applied Pharmacokinetics
 - e. Pharmacotherapy 1
 - f. Pharmacotherapy 2
 - g. Pharmacotherapy 3
 - h. Pharmacotherapy 4
 - i. Pharmacotherapy 5
 - j. Pharmaceutical Industry
 - k. Pharmaceutical Supplies Management
 - l. Research Methods and Biostatistics
7. Grade D is not more than 5 (five) courses
8. No Grade E

L. END OF STUDY JUDICIUM

End of study is the final stage of determining a student's graduation in the Undergraduate Pharmacy Study Program. To be able to register at the end of study Judicium, students are required to enroll at the academic administration division. Students can be declared to have passed at the end of study Judicium with the main requirement of having completed the thesis and the Community Service with minimum grade of B and cumulative GPA ≥ 2.50 respectively. In addition to these main requirements, students must meet the requirements and attach documents as follows:

1. Registration form signed by the academic supervisor and the head of study program
2. Proof letter of submission of thesis manuscript signed by the dean, supervisor and examiner
3. Proof letter of submission of thesis manuscript to the faculty
4. Community Service minimum B
5. Proof letter of free book loan from the Central Library
6. Free laboratory letter from inside and outside University
7. Proof letter of free financial administration from the Faculty
8. Course result record approved by the academic supervisory lecturer and the Head of Study Program
9. Thesis summary paper for publication draft
10. Certificate of completed revision thesis
11. A copy of the thesis cover page (1 sheet) and abstract with the title written in English and signed by one of the final assessment examiners
12. Payment proof of donations to the central library
13. Submission proof of the final assignment to the Central Library as hard copy and soft copy in the PDF and MS-Word files